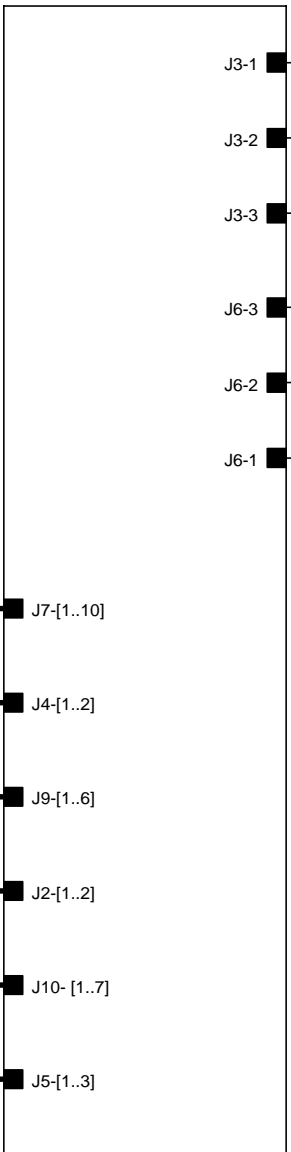


BRD1



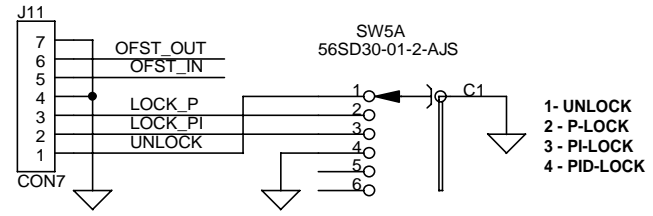
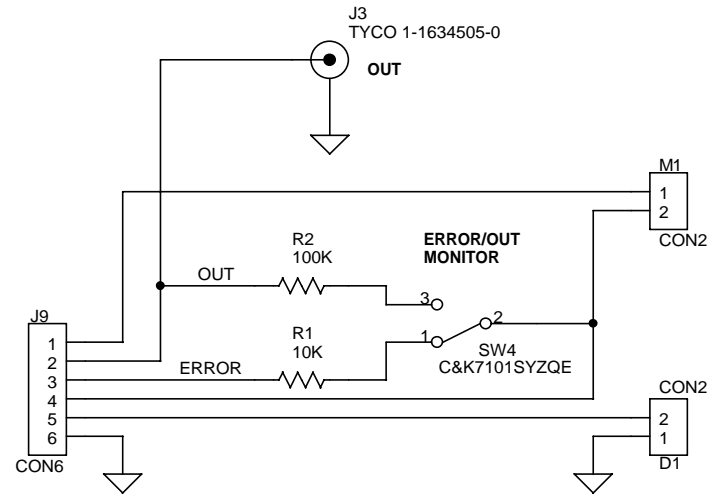
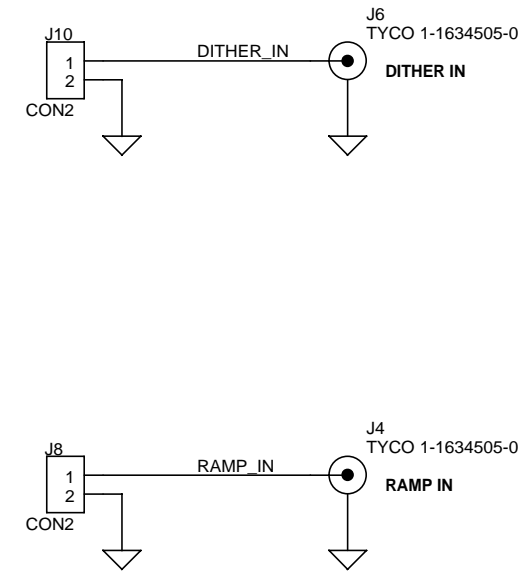
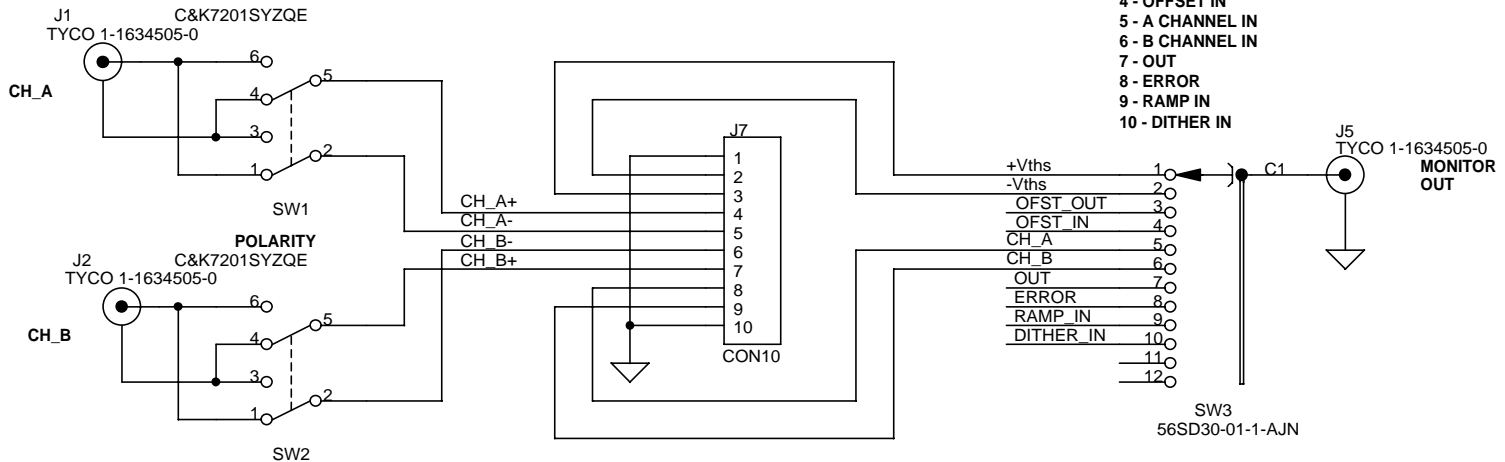
FRONTPANEL BOARD

BRD2



MAIN BOARD

LENS		Via N. Carrara, 1 Sesto Fiorentino (FI)	
Title PID CONTROLLER - ASSEMBLY			
Size A4	Document Number pid_controller_rev0812.dsn\ASSY		Rev 00
Date:	Friday, October 23, 2009	Sheet	1 of 1



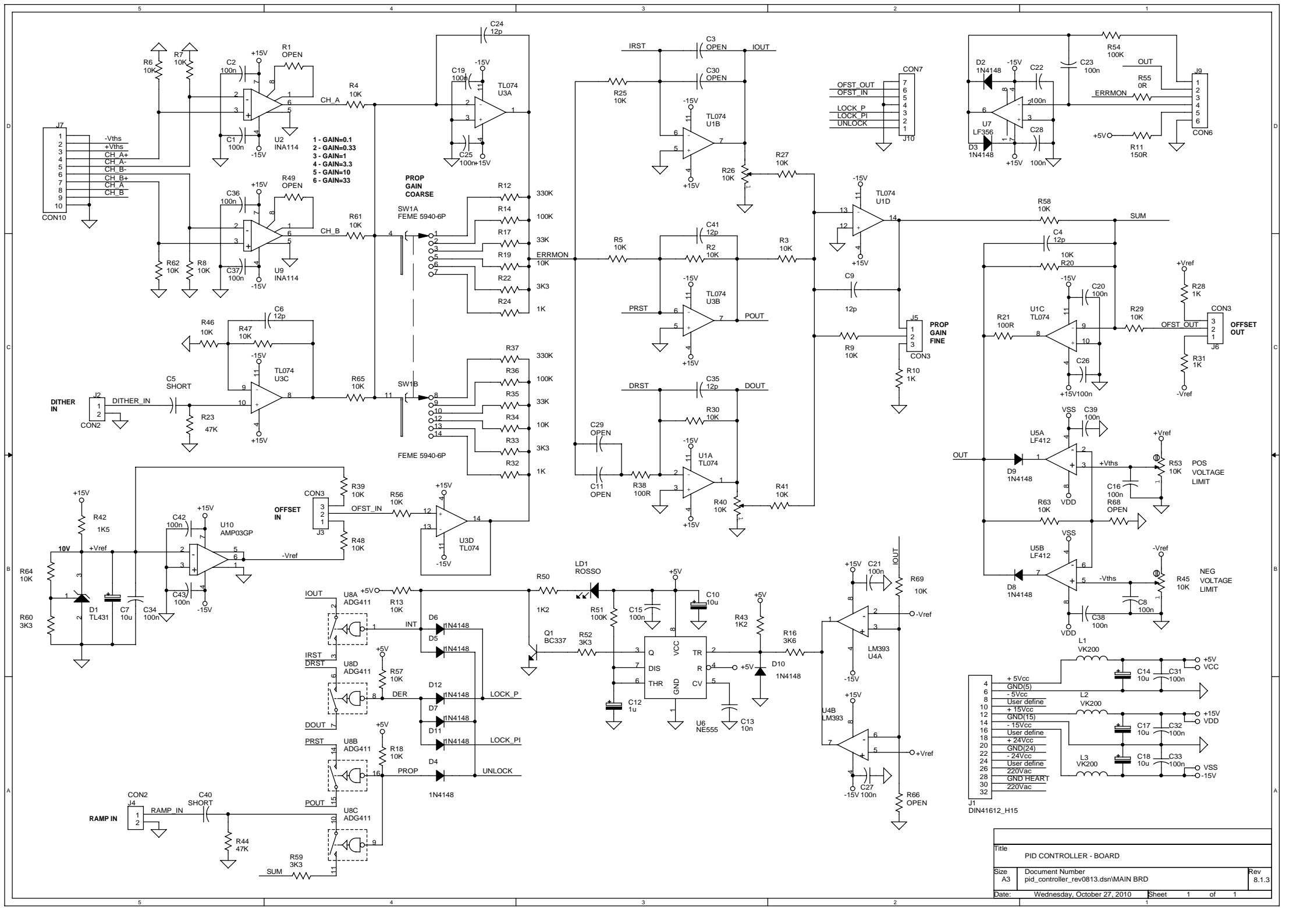
LENS		Via N. Carrara, 1 Sesto Fiorentino (FI)	
Title PID CONTROLLER - FRONT PANEL			
Size A4	Document Number pid_controller_rev0812.dsn\FRONTP	Rev 00	
Date:	Friday, October 23, 2009	Sheet	1 of 1

PID CONTROLLER - FRONT PANEL Revised: Friday, October 23, 2009
 pid_controller_rev0812.dsn\FRONTP Revision: 00

LENS
 Via N. Carrara, 1 Sesto Fiorentino (FI)

Bill Of Materials October 23,2009 11:16:03 Page1

Item	Quantity	Reference	Description	Value	Supplier Ref
1	4	M1,D1,J8,J10	Conn. M Diritto p.2.54	CON2	
2	6	J1,J2,J3,J4,J5,J6	Conn. BNC da Pannello Vert.	TYCO 1-1634505-0	Farnell 1020960
3	1	J7	Conn. M. Vert. p.2.54	CON10	
4	1	J9	Conn. M. Vert. p.2.54	CON6	
5	1	J11	Conn. M. Vert. p.2.54	CON7	
6	1	J12	Conn. M. Vert. p.2.54	CON3	
7	1	R1	Res. 0.25W 1%	10K	
8	1	R2	Res. 0.25W 1%	100K	
9	1	R3	Potenziom. cermet 1giro	10K RS 484-9102	
10	2	SW2,SW1	Deviatore a levetta 2V2P	C&K7201SYZQE	RS 249-2934
11	1	SW3	Comm. Rotativo 1V12P	56SD30-01-1-AJN	Farnell 1190375
12	1	SW4	Deviatore a levetta 1V2P	C&K7101SYZQE	RS 249-2912
13	1	SW5	Comm. Rotativo 2V6P	56SD30-01-2-AJS	Farnell 1190384



Title		
PID CONTROLLER - BOARD		
Size	Document Number	Rev
A3	pid_controller_rev0813.dsn/MAIN BRD	8.1.3
Date:	Wednesday, October 27, 2010	Sheet 1 of 1

PID CONTROLLER - BOARD Revised: Wednesday, November 17, 2010
 pid_controller_rev0813.dsn\MAIN BRD Revision: 8.1.3

Bill Of Materials November 17,2010 13:53:38 Page1

Q.ty	Reference	Description	Part Value
1	24	C1,C2,C8,C15,C16,C19,C20, C21,C22,C23,C25,C26,C27, C28,C31,C32,C33,C34,C36, C37,C38,C39,C42,C43	Cond. Cer. 50V P5.08 100n
2	2	C11,C3	Cond. Poly. 50V P5.08 OPEN
3	6	C4,C6,C9,C24,C35,C41	Cond. Cer. 50V P5.08 12p
4	2	C40,C5	Cond. Cer. 50V P5.08 SHORT
5	5	C7,C10,C14,C17,C18	Cond. Elettr. Tant. 25V P5.08 10u
6	1	C12	Cond. Elettr. Tant. 25V P5.08 1u
7	1	C13	Cond. Cer. 50V P5.08 10n
8	2	C30,C29	Cond. Poly. 50V P10.16 OPEN
9	1	D1	Voltage Ref IC TL431
10	11	D2,D3,D4,D5,D6,D7,D8,D9, D10,D11,D12	Diode 1N4148
11	1	J1	Connettore 15P PCB 90° DIN41612_H15
12	2	J4,J2	Connettore M Diritto P2.54 CON2
13	3	J3,J5,J6	Connettore M Diritto P2.54 CON3
14	1	J7	Connettore M Diritto P2.54 CON10
15	1	J9	Connettore M Diritto P2.54 CON6
16	1	J10	Connettore M Diritto P2.54 CON7
17	1	LD1	Led ROSSO 3mm ROSSO
18	3	L1,L2,L3	Induttanza VK200
19	1	Q1	Transistor BC337
20	4	R1,R49,R66,R68	Res. 0.25W 1% OPEN
21	31	R2,R3,R4,R5,R6,R7,R8,R9, R13,R18,R19,R20,R25,R27, R29,R30,R34,R39,R41,R46, R47,R48,R56,R57,R58,R61, R62,R63,R64,R65,R69	Res. 0.25W 1% 10K
22	5	R10,R24,R28,R31,R32	Res. 0.25W 1% 1K
23	1	R11	Res. 0.25W 1% 150R
24	2	R12,R37	Res. 0.25W 1% 330K

25	4	R14,R36,R51,R54	Res. 0.25W 1%	100K
26	1	R16	Res. 0.25W 1%	3K6
27	2	R17,R35	Res. 0.25W 1%	33K
28	2	R21,R38	Res. 0.25W 1%	100R
29	5	R22,R33,R52,R59,R60	Res. 0.25W 1%	3K3
30	2	R44,R23	Res. 0.25W 1%	47K
31	4	R26,R40,R45,R53	Trim. Orizz. 10G.	10K
32	1	R42	Res. 0.25W 1%	1K5
33	2	R43,R50	Res. 0.25W 1%	1K2
34	1	R55	Res. 0.25W 1%	0R
35	1	SW1	Comm. Rot 2vie 6pos.	FEME 5940-6P
36	2	U1,U3	Circ. Integr.	TL074
37	2	U9,U2	Circ. Integr.	INA114
38	1	U4	Circ. Integr.	LM393
39	1	U5	Circ. Integr.	LF412
40	1	U6	Circ. Integr.	NE555
41	1	U7	Circ. Integr.	LF356
42	1	U8	Circ. Integr.	ADG411
43	1	U10	Circ. Integr.	AMP03GP